



ISTITUTO NAZIONALE DI FISICA NUCLEARE

Sezione di Firenze

INFN-yy-xxx/FI

6 Gennaio 1998

INFN INTERNAL NOTES

Carlo Natale¹, Epifania Rossi²

¹⁾ *INFN, Sezione di Napoli, Dip. Scienze Fisiche, Univ. di Napoli, I-80125 Napoli, Italy*

²⁾ *INFN, Laboratori Nazionali di Frascati, P.O. Box 13, I-00044 Frascati, Italy*

Abstract

This is where the abstract should be placed. Type the abstract in 14pt baseline skip, same format (12pt) and font (Times) as text. Title, author names and abstract should fit in one page. For large collaborations, you need to list individual names in the next page.

*Published by
Laboratori Nazionali di Frascati*

1 Guidelines

Authors should use this template and style file to write their LaTeX document. Both template and style files can be downloaded from:

<http://library.lnf.infn.it/nota-interna-infn/>

You should also download the INFN logo.

2 Text

Type text in 12pt Times, 17pt baseline skip, within a 220 mm × 150 mm frame.

3 Section Headings

Type section headings in bold-face letters.

3.1 Sub-headings

Type section sub-headings in bold-face letters.

3.1.1 *Sub-sub headings*

Type sub-sub headings in Italics.

4 Illustrations, photographs and tables

Figures (see example in fig.1) should be any graphic file supported by the `graphicx` package, with captions below them and sequentially numbered with Arabic numbers. The size of illustrations, photographs and tables (see example tab.1) must not exceed the frame 220 mm × 150 mm and can either be embedded in the text or placed at the end of the text. Only black and white photographs are acceptable and must be sharp. Type figure and table captures in Times 12 pt.

5 Formulae

All equations (see example eq.1) must be numbered consecutively throughout the text. Equation numbers must be enclosed in brackets and right-adjusted.

$$E^2 = p^2 + m^2 \tag{1}$$

6 Footnotes

Type footnotes ¹ in single spacing at the bottom of the page where they are alluded to.

¹As this footnote

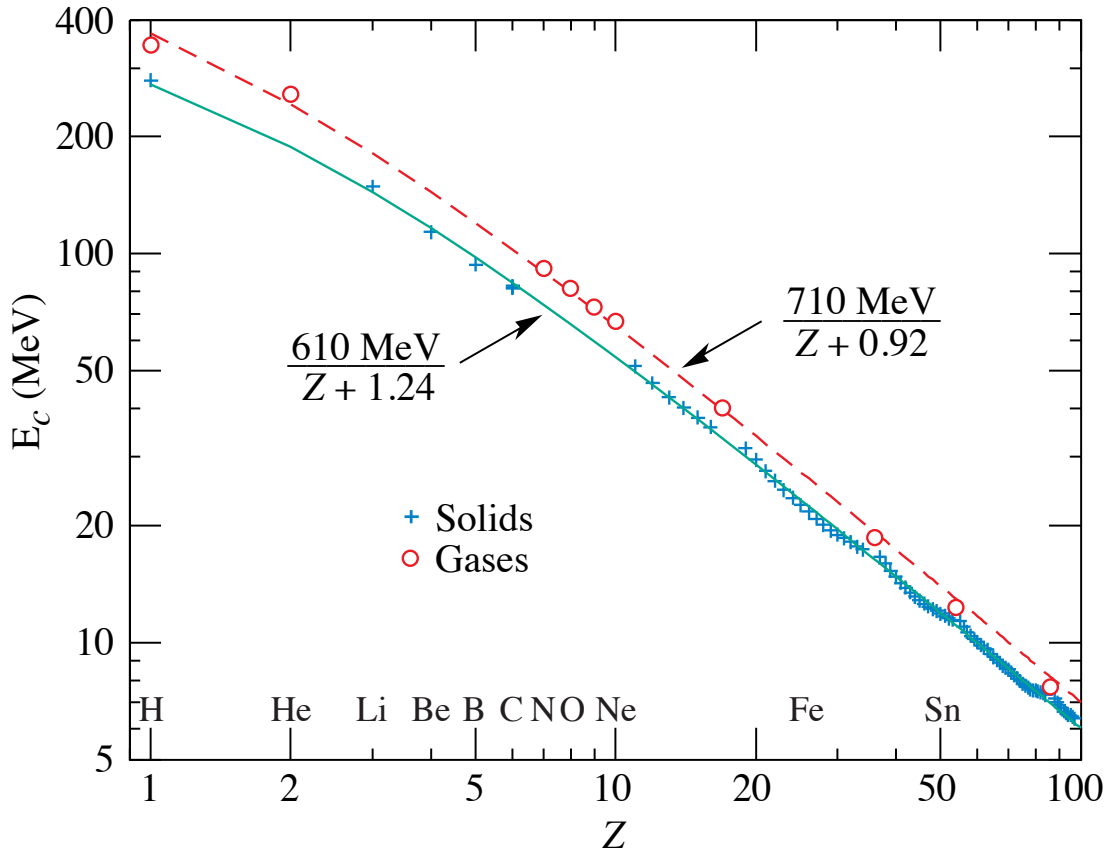


Figure 1: Example of figure caption.

Table 1: Example of a table.

	experiment	simulation
side-on	$(4.81 \pm 0.06)\% E^{-\frac{1}{2}}$	$(4.70 \pm 0.05)\% E^{-\frac{1}{2}}$
head-on	$(4.7 \pm 0.1)\% E^{-\frac{1}{2}} + (3.4 \pm 0.6)\%$	$(4.6 \pm 0.3)\% E^{-\frac{1}{2}} + (3.8 \pm 1.3)\%$

7 Acknowledgements

Place acknowledgements at the end of the text.

8 References

References [1] in bibliography must be referred to in the text by a number in brackets. All references should be organized to provide initials and last name of the first author, volume (bold-face), page number, year (in brackets) of publication.

References

- [1] J.H. Christenson *et al*, Phys. Rev. Lett. **13**, 138 (1964).

- [2] M.B. Green, Superstrings and the unification of forces and particles, in: Proc. fourth M. Grossmann Meeting on General Relativity (ed. R. Ruffini, Rome, June 1985), **1**, 203 (North-Holland, Amsterdam, 1986).